

Hillside provided services in partnership with

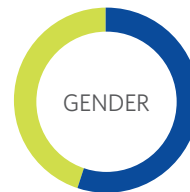
12,478 FAMILIES

FROM JULY 1, 2018 TO JUNE 30, 2019

YOUTH, ADULTS AND FAMILIES SERVED

Program Area	Served*
Adoption	243
Adult and Children's Health Homes	2,994
Customized Services	229
Day Treatment Education	485
Developmental Disabilities	73
Early Childhood Development	740
Family Development	943
Family Finding	110
Foster Care	469
Home- and Community-Based Services	852
Non-Secure Detention	158
Outpatient Treatment	1,168
Residential Treatment Includes Therapeutic Education Services	512
Youth Development	5,503

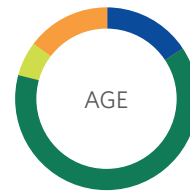
Demographics



55% Female
45% Male



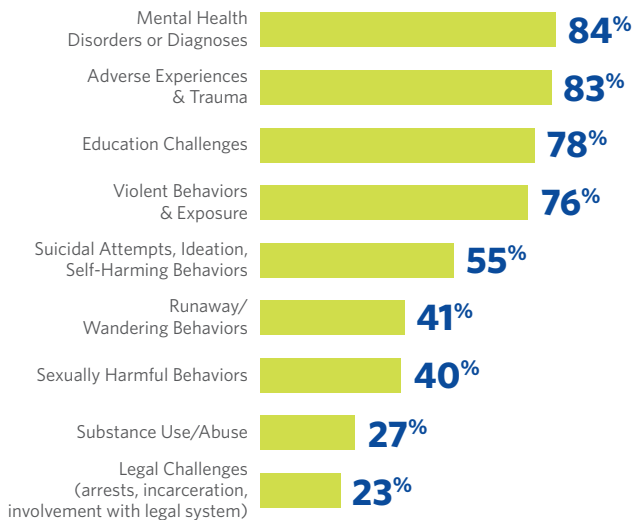
42% African-American
31% Caucasian
14% Hispanic/Latino
8% Multi-Racial
5% Other



16% 0-10
63% 11-18
6% 19-26
15% 27+

Risk Factors

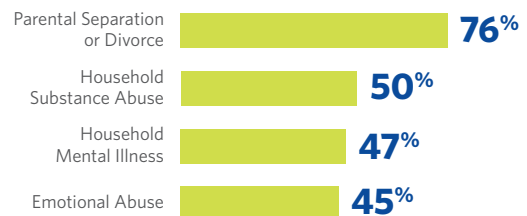
Upon admission to a Hillside program** in FY 2019, individuals presented with the following risk factors:



Adverse Childhood Experiences

Upon admission to a Hillside program,** youth and families complete a questionnaire to identify Adverse Childhood Experiences. Frequent or prolonged ACE exposure can affect a developing brain and create significant long-term health impacts, but early intervention can reduce those risks.

Among individuals entering Hillside services in FY 2019, the most frequently indicated ACEs included:



4 Average ACE Score Among Individuals in Hillside Programs
OUT OF 10 A score of 4 or higher indicates substantially increased lifetime risk.

*Includes enrollment in multiple services by some youth, adults and families.

**Excludes Hillside Work-Scholarship Connection.

OUTCOMES AT DISCHARGE

By partnering with Hillside programs and staff, youth and adults can expect to enjoy safer, healthier lives within their families and communities.

Positive Results

Upon discharge from select programs in FY 2019:



of individuals were **living with their families**, in **adoptive homes** or **independently**



were able to transition to **less intensive levels of care**

Family Satisfaction

Based on surveys conducted with youth and families served by Hillside in FY 2019:



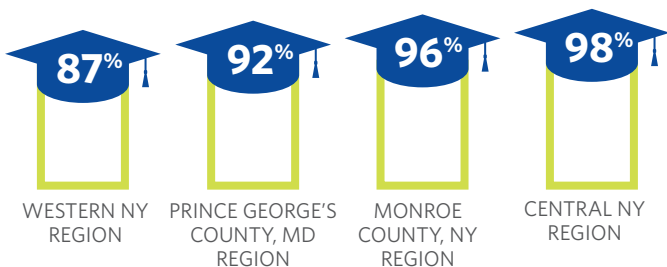
of families were **highly satisfied** with services received



strongly agreed they **would recommend** Hillside programs to family or friends

Improved On-Time Graduation Rates

Students who remained in Hillside Work-Scholarship Connection during four years of high school graduated on time at the following rates in the 2018-2019 academic year.



These rates are **significantly higher** than the overall graduation rates seen by students in their districts.

Building Social-Emotional Well-Being

The **Developmental Assets Profile** measures assets that affect social-emotional well-being. Youth in most Hillside services complete this assessment upon admission and at discharge. Among youth discharged in FY 2019:



increased their overall number of assets



in the "challenged and vulnerable" range at admission **increased their overall number of assets** at discharge

Strengthening Connections & Support

Hillside uses the **Youth Connections Scale** in many services to measure relational permanency and supports that are critical to a young person's long-term success.



of youth discharged in FY 2019 **increased their connections and supports** between admission and discharge

LONG-TERM OUTCOMES

Long-term results are indicated by the success of individuals served by Hillside after returning to families, homes and neighborhoods.

Enrolled in/Graduated from School 90%

Permanent Living Situation 72%

Avoided Incarceration Since Last Survey or Discharge 87%

Avoided Hospitalization Since Last Survey or Discharge 81%

These outcomes were noted by youth and families in surveys completed during FY 2018 and FY 2019, 6-18 months after leaving select Hillside programs.



To learn more about our commitment to research-driven innovation, visit hillside.com/research or contact Laura Maggiulli, Director of Research and Business Intelligence, at research@hillside.com.