

WIVES

HILLSIDE WORK-SCHOLARSHIP CONNECTION
2015 OUTCOMES REPORT



FO
FF
CO



Graduation. College. Career.

Graduation. College. Career.



Lifting young people out of poverty and on to a path to success.

“Many say that urban graduation rates cannot rise. This is not true. Hillside Work-Scholarship Connection can raise any urban graduation rate to a minimum of 80%. Here is how.”

— Danny Wegman, CEO
Wegmans Food Markets

Who we are

For nearly 30 years, Hillside Work-Scholarship Connection (HW-SC) has helped students overcome the barriers that cause them to drop out/abandon their education. We change the norm for students and families living in generational poverty by giving them necessary guidance and the tools to be successful in school – expanding their access to education and employment opportunities.

Where we are

- Rochester, New York
- Syracuse, New York
- Buffalo, New York
- Prince George’s County, Maryland

What we do

Mentoring

Youth advocates are based in every school to:

- Release the potential of each student and are accountable for their success
- Engage students and families to help them connect to academic, workforce and social supports

Academic Support

- Partnerships with local colleges, universities and providers like Encompass for tutoring

Social and Life Skills

- Weekly activities proven to reduce teen pregnancy, school suspensions, and to promote a positive attitude

Workforce Development

- 25 hours of workforce-readiness training
- Long term jobs with employment partners

College Preparation and Support

- Assistance with completing college applications, obtaining financial aid and accessing scholarships

Grade promotion & graduation

Grade promotion rates: year-to-year aggregate results



Grade promotion rates, 2013-14: keeping on track to graduation



Graduation rates: students retained in HWSC



Graduation & job training

Graduation Rates: employed with employment partners



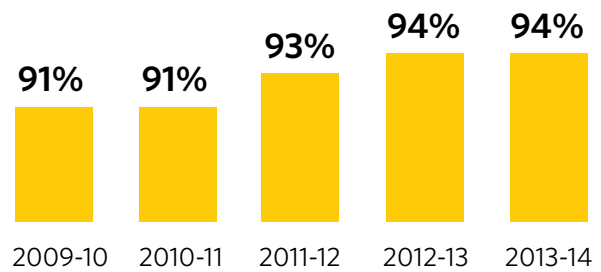
GEOGRAPHIC REACH

Buffalo, Rochester, and Syracuse, NY;
and Prince George's County, MD



CONSISTENTLY DELIVERING RESULTS

Graduation Rates:
employed with employment partners

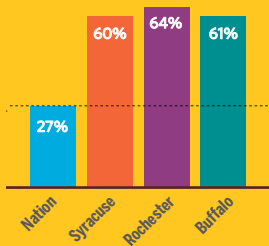




1 in 2 Urban Children in Upstate New York live in Poverty.

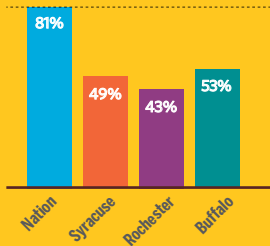


Children Living on Public Assistance



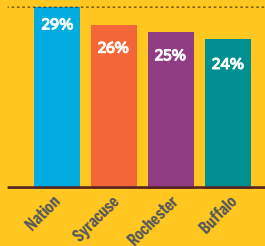
Source: U.S. Census Bureau, American Communities Survey, 2009-2013

High School Graduation Rate



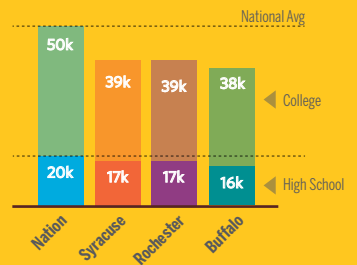
Source: NYS Department of Education (2013-2014)

Adults Age 25+ with a Bachelor's Degree or Higher



Source: U.S. Census Bureau, American Communities Survey, 2009-2013

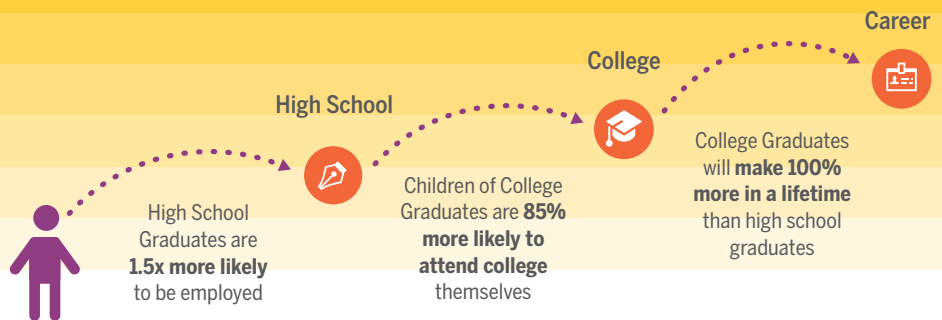
Salary Earnings Based on Education (\$)



Source: U.S. Census Bureau, American Communities Survey, 2009-2013

Breaking The Cycle Of Poverty

The ideas and accomplishments of our young people are the ingredients of all our futures — and an education and a job are the vital first step out of multi-generational poverty and into personal achievement, economic stability and healthy communities.



Hillside Work-Scholarship Connection is breaking the cycle

100%

of our Students are at risk of dropping out of high school.

84%

of Students who stick with our program graduate from high school.

94%

of our Students employed with job partners graduate from high school.



Graduation. College. Career.

Hillside Work-Scholarship Connection: Recognized for Excellence

Since the inception of Hillside Work-Scholarship Connection, over 5,000 students have graduated and are career ready.

Why Invest? It works.

- Bill and Melinda Gates Foundation Report - Hillside Work-Scholarship Connection was named one of 23 high-potential programs nationwide in "Success at Every Step: How 23 Programs Support Youth on the Path to College and Beyond," a Bill and Melinda Gates Foundation-funded report from the American Youth Policy Forum.
- Edna McConnell Clark Foundation — Recipient of two multimillion-dollar investments to help HW-SC replicate its program and demonstrate its impact in more high-need school districts
- American Business Press — Points of Light Award
- National Center on Education and the Economy
- Venture Philanthropy Partners — Recipient of up to \$1.95 million investment for program in Prince George's County, Md., to enable nearly 900 middle and high school students to gain work experience from local employers and the support needed to successfully graduate
- PEPNet Award — National Youth Employment Coalition Best Practice
- Partners for Education and Business, Inc. — Partner of the Year Quality Award
- Social Impact Exchange S&I 100 award — An Index of Top Nonprofits Creating Social Impact

"We believe in order to be successful the strongest non-profits need to come together. We constantly talk to people that are working with kids' organizations, and our partners identified Hillside as the best in the country. Venture Philanthropy Partners is pleased to work with Hillside to change the outcomes for young people, particularly, low-income youth."

— Carol Thompson-Cole, President & CEO
Venture Philanthropy Partners



hillside.com

Graduation. College. Career.